



PARTHENAISE

TONIC

ZPA 004

born: 20.09.2010

breeder: Montážně obchodní firma
s.r.o., B.Mlýn

PEDIGREE

ATOMIC ZPA-021

FR 7969870879

Chenille

FR 7913951396

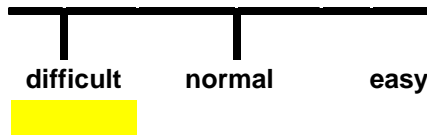
Soprano

Rocaille

ORIENT

Varsovie

CALVING



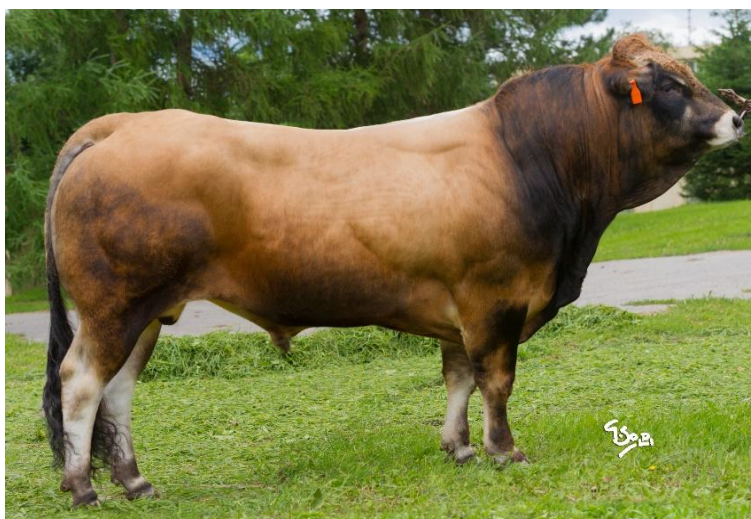
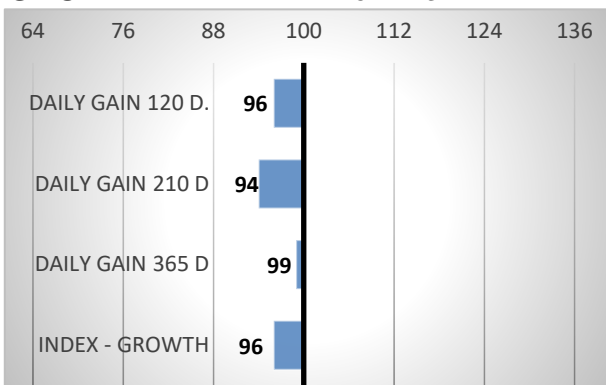
RELATIVE BREEDENG VALUES - CZE

9/2024

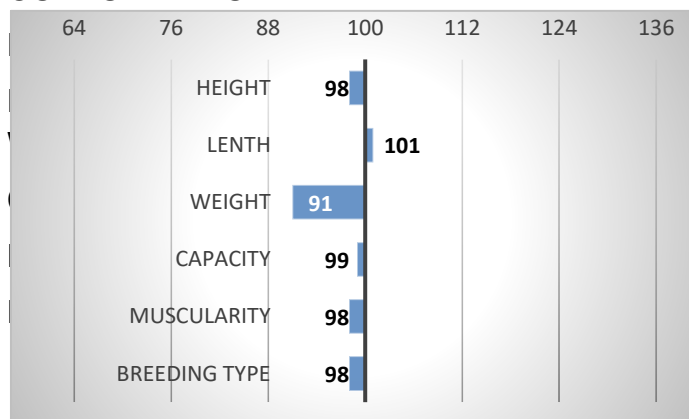
GROWTH

CALVES 17

HERDS 5



CONFORMATION



Parthenaise cattle is one of the oldest beef breeds in France. The major advantage of keeping heavily muscled Parthenaise is to produce expensive cuts of high quality meat with very little fat and high meat to bone ratio.

EXTERIOR EVALUATION

Frame			Body capacity			Muscularity			Breeding type	Total
VT	DT	HM	PŠ	HH	DZ	PL	HŘ	ZÁ		
6	7	6	7	8	6	7	7	7	7	68

acronyms: VT - height , DT - length , HM - weight, PŠ - chest width, HH - chest depth, DZ - pelvis length, PL - shoulder, HŘ - top line, ZÁ - Thigs

PERFORMANCE TEST

weight 120 d	175 kg
weight 210 d.	273 kg
weight 365 d	450 kg
daily gain in test	-- g
daily g. since birth	1135 g

MUSCULARITY