

# GALLOWAY

## KASS

## ZGA 401



born: 06.04.2009

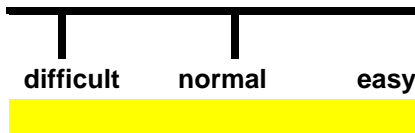
breeder: Greiner Juergen, Hagen

### PEDIGREE

KASS\_12 F Solway  
271428  
VIOLA I64 Holsten  
113264164 DE

SOLWAY Daniel 7D  
SOLWAY Kareem 10A  
BONNI ILM  
VIOLA D50 Holsten

### CALVING

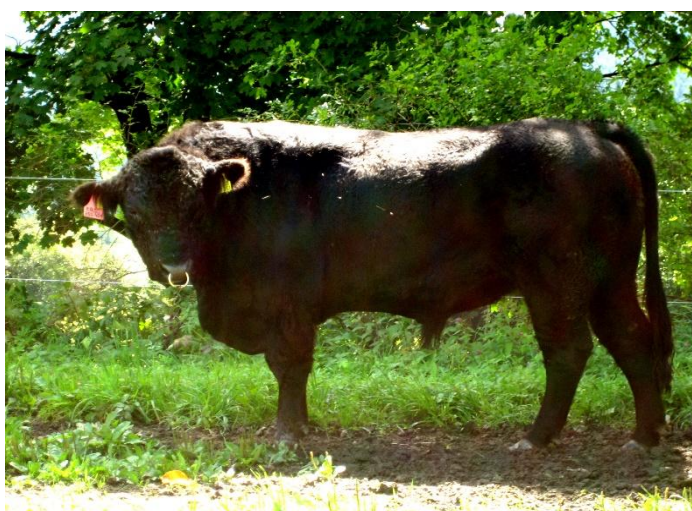
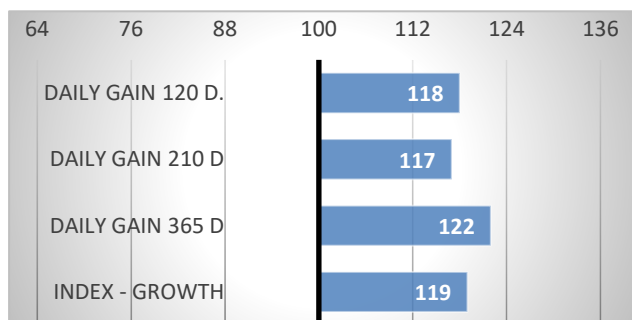


### RELATIVE BREEDENG VALUES - CZE

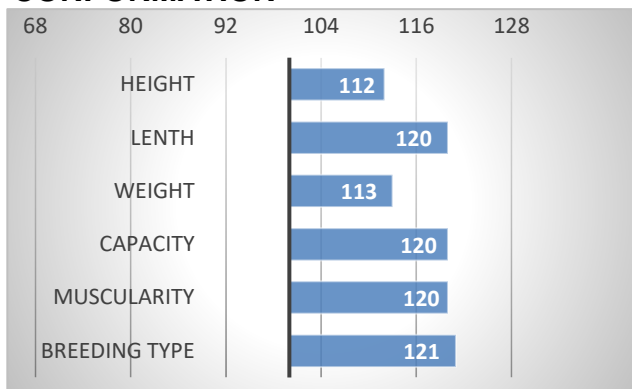
9/2024

#### GROWTH

CALVES 18      HERDS 3



#### CONFORMATION



Four of his sons are active in the breeding. They were selected for breeding with 75, 69, 78 and 87 points.

In the Czech Republic Kass has first four calved daughters and BV for growth in maternal effect 108.

#### EXTERIOR EVALUATION

Frame			Body capacity			Muscularity			Breeding type	Total
VT	DT	HM	PŠ	HH	DZ	PL	HŘ	ZÁ		
10	7	7	6	6	7	6	6	7	7	69

acronymes: VT - height , DT - length, HM - weight, PŠ - chest width, HH - chest depth, DZ - pelvis length, PL - shoulder, HŘ - top line, ZÁ - Thigs

#### PERFORMANCE TEST

weight 120 d	-- kg
weight 210 d.	0 kg
weight 365 d	0 kg
daily gain in test	0 g
daily g. since birth	0 g