

MASNÝ SIMENTÁL / BEEF SIMMENTAL



born: 07.06.2017

DINGO P

ISI 133

breeder: Agrochyt s.r.o.Mohelno

PEDIGREE

DEL Fur DECIDER 12R

ZMS-275 UK 523461502995

Anička Agrochyt P

CZ 380906961

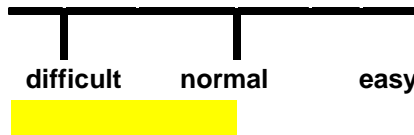
Auchorachan ACDC 09 9

Delfur Margaret S70

Keeldrum Schubert R ZSI-488

P CZ 17245932

CALVING

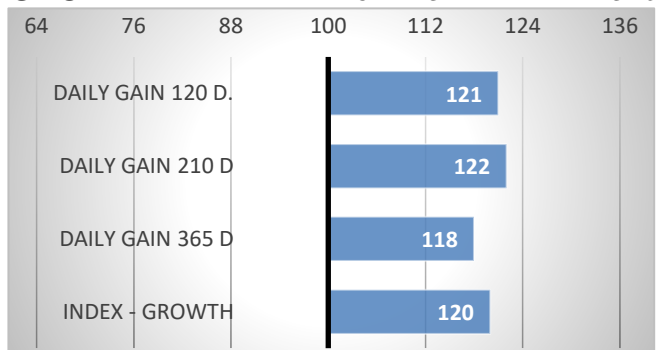


RELATIVE BREEDENG VALUES - CZE

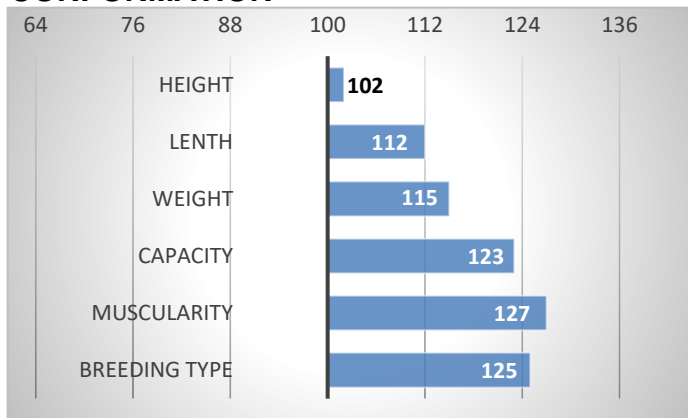
DAUGHTERS 7 12/2024

GROWTH

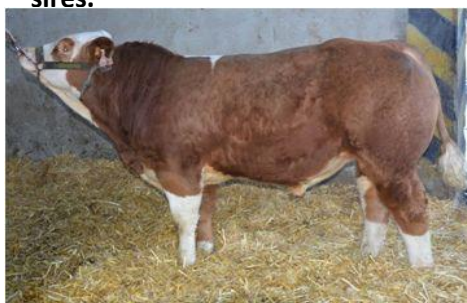
CALVES 47 HERDS 13



CONFORMATION



Dingo is interesting especially for his British pedigree on both, paternal and maternal side. Dingo P is used by German breeders as father of sires.



Dingo P

- 9 months old

PERFORMANCE TEST

weight 120 d	218 kg
weight 210 d.	408 kg
weight 365 d	631 kg
daily gain in test	-- g
daily g. since birth	1602 g

EXTERIOR EVALUATION

Frame			Body capacity			Muscularity			Breeding type	Total
VT	DT	HM	PŠ	HH	DZ	PL	HŘ	ZÁ		
6	7	10	7	8	7	8	8	8	8	77

acronymes: VT - height , DT - length, HM - weight, PŠ - chest width, HH - chest depth, DZ - pelvis length, PL - shoulder, HŘ - top line, ZÁ - Thigs

BRITISH PEDIGREE

EXTREME MUSCULARITY